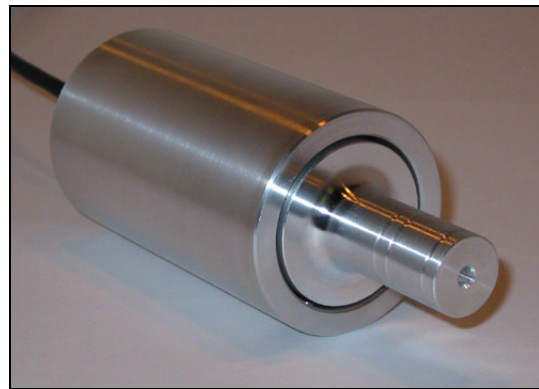


F325

High Accuracy Web Tension Loadcell
Standard Ranges 50, 100, 200 and 500N (5 to 50kg)

- ◆ **Very high precision**
- ◆ **Overload stop**
- ◆ **Precision alignment tool facility**
- ◆ **Standard bearing mounting**
- ◆ **Mounting foot provision**
- ◆ **Optional mounting flange**



This high precision web tension loadcell is designed and built to meet the needs of machine designers, installation fitters and end users by the incorporation of alignment features with maximum flexibility. The high performance of this loadcell is not compromised by the relatively large errors that can be produced by imprecise installation.

We are happy to design variants of this loadcell to meet your specific requirements. Please consult our engineering department.

Details of our other loadcell families can be found in the Loadcell Specifier Guide. If you require a copy please contact our sales department or look on our web site at www.novatechloadcells.co.uk.

Ordering Codes:	See the loadcell ordering code sheet for more details. Add range in the required units.		
F325CF00H0	Compression, unrationalised		

F325 Specification

Parameter	Value	Unit
Non-linearity - Terminal	±0.03	% RL
Hysteresis	±0.03	% RL
Creep - 20 minutes	±0.05	% AL
Repeatability	±0.01	% RL
Rated output - Nominal	1.2	mV/V
Rated output - Rationalised	1.0	mV/V
Rationalisation tolerance	±0.1	% RL
Zero load output	±4	% RL
Temperature effect on rated output per °C	±0.005	% AL
Temperature effect on zero load output per °C	±0.01	% RL
Temperature range - Compensated	-10 to +50	°C
Temperature range - Safe	-10 to +80	°C
Excitation voltage - Recommended	10	V
Excitation voltage - Maximum	10	V
Bridge resistance	350	Ω
Insulation resistance - Minimum at 50Vdc	500	MΩ
Overload - Safe	50	% RL
Overload - Ultimate	200	% RL
Weight - Nominal (excluding cable)	380	g

All standard ranges are manufactured in aluminium.

Structural stiffness - Nominal					
Range (N)	Stiffness (N/m)	Range (kN)	Stiffness (N/m)	Range (N)	Stiffness (N/m)
50	8.3×10^5	200	1.5×10^6		
100	1.1×10^6	500	2.0×10^6		

Notes

1. AL = Applied load.
2. RL = Rated load.
3. Temperature coefficients apply over the compensated range.

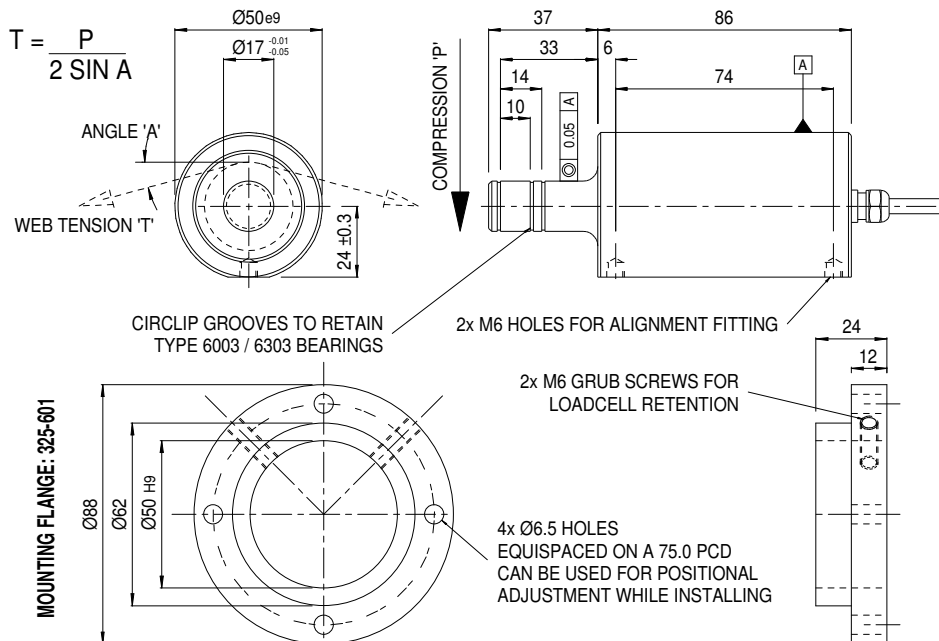
Connections

The loadcell is fitted with 2 metres of PVC insulated 4 core screened cable type 7-2-4C.

Excitation + = Red Signal + = Yellow Screen = Orange

Excitation - = Blue Signal - = Green

The screen is not connected to the loadcell body.



Novatech reserves the right to vary the foregoing details without prior notice

01/2010

NOVATECH MEASUREMENTS LTD

83 CASTLEHAM ROAD, ST LEONARDS ON SEA, EAST SUSSEX, TN38 9NT, ENGLAND

Tel: 01424 852744

email: info@novatechloadcells.co.uk

Fax: 01424 853002

www.novatechloadcells.co.uk